

Communicable | Disease

2009 Update

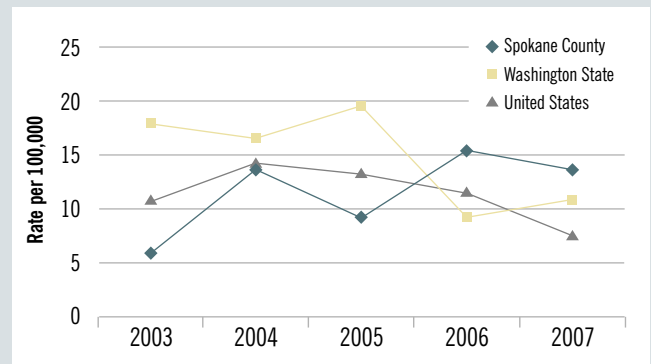
This indicator is 1 of 44 Spokane Counts indicators found at www.srhd.org/SpokaneCounts

Vaccine Preventable Diseases

Vaccine preventable diseases are measured as the number of reported cases per 100,000 individuals. The vaccine preventable diseases included in this indicator are: Haemophilus influenza, acute hepatitis A, acute hepatitis B, measles, mumps, pertussis, rubella, tetanus, and meningococcal disease. Disease prevention is key to public health. Vaccines have been able to control many infectious diseases, thereby decreasing the morbidity and mortality associated with those diseases.¹

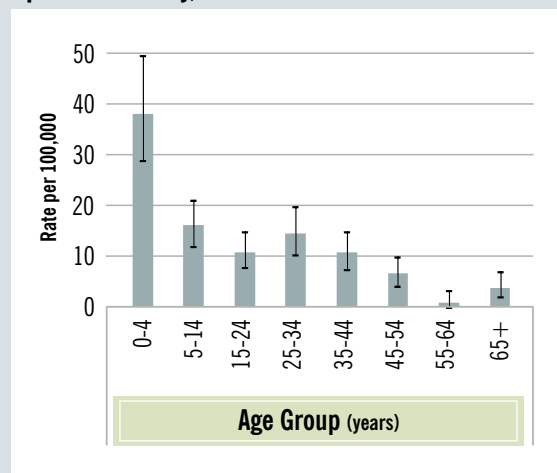
There were 61 reported cases of vaccine preventable disease in Spokane County in 2007. The rate of vaccine preventable disease significantly increased from 2003 to 2007. Spokane County had a lower rate of vaccine preventable disease in 2003-2007 than did Washington State, but a similar rate as the U.S.

Vaccine Preventable Diseases



Source: Washington State Department of Health; Centers for Disease Control and Prevention

Demographic Disparities in Vaccine Preventable Diseases Spokane County, 2003-2007



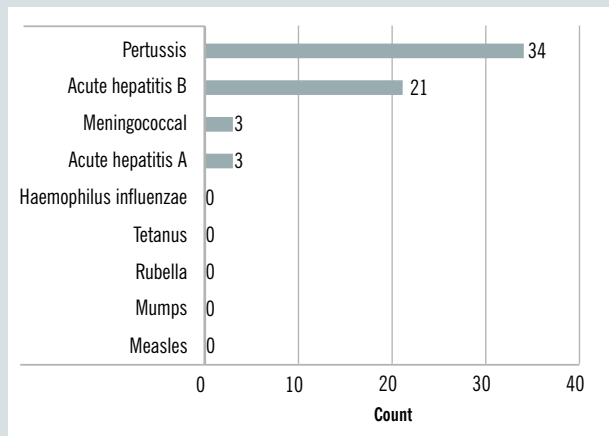
Source: Washington State Department of Health

There was no difference in disease rates by sex.

Among Spokane County residents in 2007:

- Young children were more likely to contract a vaccine preventable disease than were older age groups.

Types of Vaccine Preventable Diseases Spokane County, 2007



Source: Washington State Department of Health

The most common vaccine preventable diseases reported were pertussis and acute hepatitis B. There were very few cases of pertussis reported before 2004. Since then, pertussis has become the most commonly reported vaccine preventable disease.

Among Spokane County preschool children, 73% were up-to-date on their immunizations in 2006.² For school age children (K-12) in the school year 2007-2008, 6.8% were not fully immunized and claimed an exemption. The majority of exemptions were personal (91.2%) compared to medical (5.9%) and religious (2.9%).³

Indicator: Vaccine Preventable Diseases

Rate per 100,000
(95% Confidence Interval)

	2003	2004	2005	2006	2007	2003-2007	
Total	Spokane County	5.8 (4.0, 8.6)	13.4 (10.4, 17.4)	9.2 (6.7, 12.5)	15.3 (12.1, 19.4)	13.5 (10.5, 17.4)	11.5 (10.2, 13.0)
	Washington State	17.9 (16.9, 19.0)	16.6 (15.6, 17.6)	19.6 (18.5, 20.7)	9.3 (8.6, 10.1)	10.8 (10.1, 11.7)	14.8 (14.4, 15.2)
	National	10.7	14.2	13.3	11.5	7.5	11.4
Age Group (years)	0-4	14.5 (5.7, 37.4)	65.4 (41.4, 103.4)	25.2 (12.2, 52.1)	42.8 (24.5, 74.7)	41.8 (23.9, 73.0)	38.0 (29.0, 49.7)
	5-14	0.0 (0.0, 6.4)	21.8 (12.7, 37.3)	11.8 (5.7, 24.4)	23.6 (14.0, 39.6)	23.6 (14.0, 39.5)	16.1 (12.2, 21.4)
	15-24	6.0 (2.3, 15.5)	11.9 (6.0, 23.5)	10.3 (5.0, 21.2)	15.8 (8.8, 28.3)	11.3 (5.7, 22.3)	11.1 (8.1, 15.2)
	25-34	20.5 (11.4, 36.7)	7.5 (2.9, 19.3)	11.3 (5.2, 24.6)	18.5 (10.1, 34.1)	14.5 (7.3, 28.6)	14.5 (10.6, 19.8)
	35-44	6.3 (2.4, 16.2)	6.4 (2.5, 16.3)	8.0 (3.4, 18.7)	16.0 (8.7, 29.5)	17.7 (9.9, 31.7)	10.8 (7.8, 15.2)
	45-54	3.1 (0.9, 11.5)	9.3 (4.3, 20.3)	6.1 (2.4, 15.7)	9.0 (4.1, 19.6)	5.9 (2.3, 15.2)	6.7 (4.4, 10.2)
	55-64	0.0 (0.0, 9.5)	0.0 (0.0, 9.0)	0.0 (0.0, 8.6)	2.1 (0.4, 12.0)	2.0 (0.4, 11.4)	0.9 (0.2, 3.3)
	65+	0.0 (0.0, 7.2)	3.7 (1.0, 13.5)	3.6 (1.0, 13.2)	7.1 (2.8, 18.3)	5.2 (1.8, 15.3)	4.0 (2.2, 7.1)
Sex	Male	5.2 (2.9, 9.4)	12.7 (8.8, 18.5)	9.3 (6.0, 14.4)	19.3 (14.3, 26.0)	13.1 (9.1, 18.8)	12.0 (10.1, 14.2)
	Female	6.4 (3.8, 10.8)	14.1 (9.9, 20.0)	9.0 (5.8, 13.9)	11.5 (7.9, 16.9)	13.9 (9.9, 19.7)	11.0 (9.2, 13.2)

Source: Washington State Department of Health; Centers for Disease Control and Prevention



January 2010

Spokane Regional Health District | Disease Prevention and Response, Community Health Assessment
1101 W. College, Room 360 | Spokane, WA 99201 | DIRECT 509.323.2853 FAX 509.232.1706 TDD 509.324.1464

1. Centers for Disease Control and Prevention. Vaccines and Immunizations. <http://www.cdc.gov/vaccines/default.htm>. Accessed 09/12/07.
2. Spokane Regional Health District, Community Health Assessment Program, 2006 Birth Certificate Follow-Back Survey of Preschool Immunization Coverage, Immunization status of preschool children in Spokane County: How are we doing?, October 2006.
3. School and Childcare Assessment Database, WA State DOH/Immunization Program, Child Profile, 10/08.