

Health | Status

2009 Update

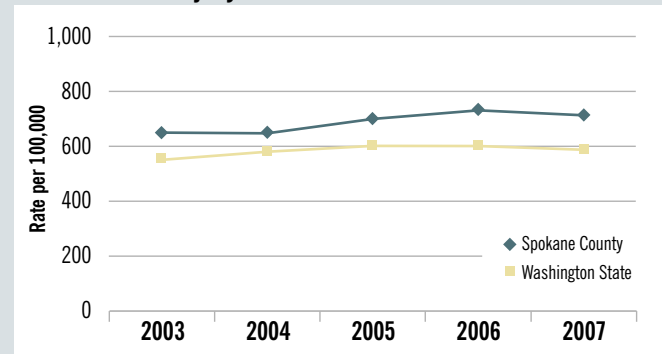
This indicator is 1 of 44 Spokane Counts indicators found at www.srhd.org/SpokaneCounts

Unintentional Injury

Unintentional injury includes the number of inpatient hospitalizations due to unintentional injuries per 100,000 individuals. This number underestimates the prevalence of unintentional injuries, because it does not capture the less severe injuries where hospitalization was not necessary. This is a measure of morbidity due to circumstances that may have been preventable by taking additional precautions or under different circumstances. Physical injury may limit an individual's ability to fully interact with or contribute to the community. Additionally, community resources are used to provide medical care to these individuals.

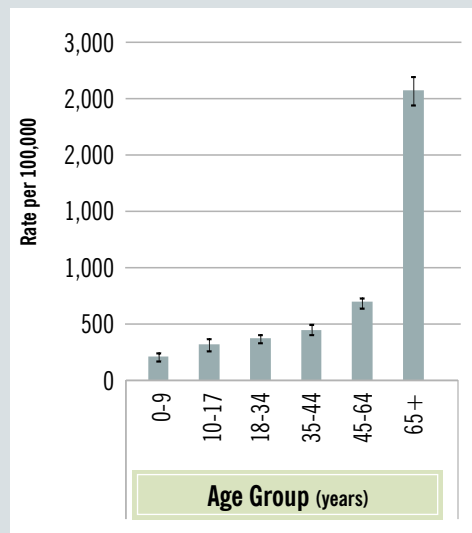
In Spokane County, 7 out of 1,000 individuals had an unintentional injury resulting in a hospitalization in 2007. There was a significant increase in the unintentional injury rate from 2003 to 2007. Spokane County had a higher rate of unintentional injuries than did Washington State in 2007.

Unintentional Injury



Source: Washington State Department of Health

Demographic Disparities in Unintentional Injury Spokane County, 2007



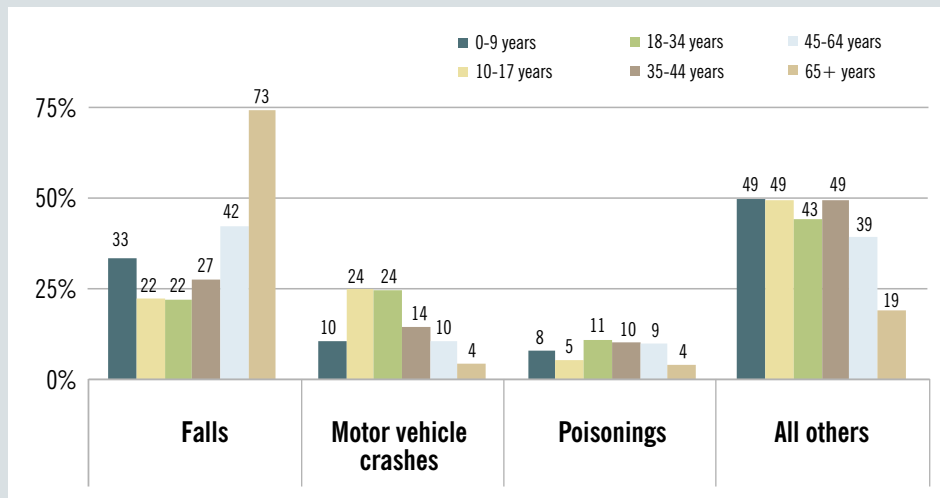
Source: Washington State Department of Health

Among Spokane County residents in 2007:

- Unintentional injury rates increased as age increased.

There was no difference in unintentional injury by sex.

Causes of Unintentional Injury Hospitalization Spokane County, 2007



Source: Washington State Department of Health

In 2007, the leading causes of unintentional injury hospitalizations were falls (51.3%), motor vehicle crashes (10.1%), and poisonings (6.7%). The cause and order varied somewhat by age group. Still, half of unintentional injury hospitalizations were because of a fall.

Indicator: Unintentional Injury

Rate per 100,000

(95% Confidence Interval)

	2003	2004	2005	2006	2007	
Total	Spokane County	649.2 (625.4, 673.7)	648.2 (624.5, 672.5)	699.0 (674.6, 724.2)	731.5 (706.7, 757.0)	711.6 (687.3, 736.5)
	Washington State	559.4 (553.5, 565.4)	585.6 (579.6, 591.7)	602.0 (596.0, 608.1)	606.3 (600.3, 612.4)	590.8 (584.9, 596.7)
Age Group (years)	0-9	191.5 (157.2, 231.2)	190.3 (156.1, 230.0)	253.4 (213.6, 298.4)	207.7 (172.1, 248.5)	202.1 (167.4, 242.0)
	10-17	249.5 (208.3, 296.4)	256.9 (215.0, 304.6)	279.8 (236.1, 329.4)	237.5 (197.5, 283.3)	315.6 (269.2, 367.7)
	18-34	355.8 (320.1, 394.5)	337.8 (303.1, 375.4)	346.5 (311.4, 384.5)	347.6 (312.8, 385.3)	360.5 (325.4, 398.4)
	35-44	371.4 (325.9, 421.6)	379.4 (333.2, 430.3)	413.3 (364.8, 466.5)	469.7 (417.9, 526.2)	448.0 (397.4, 503.4)
	45-64	556.6 (512.5, 603.6)	605.8 (560.3, 654.0)	636.4 (590.5, 685.0)	664.6 (618.4, 713.3)	684.1 (637.9, 732.8)
	65+	2,578.2 (2,444.5, 2,717.6)	2,471.5 (2,341.3, 2,607.2)	2,647.2 (2,513.5, 2,786.3)	2,855.3 (2,717.8, 2,998.1)	2,563.1 (2,434.7, 2,696.7)
Sex	Male	613.0 (580.2, 647.2)	611.7 (579.1, 645.8)	693.4 (658.7, 729.4)	686.4 (652.3, 721.9)	709.8 (675.5, 745.6)
	Female	684.1 (650.1, 719.6)	683.4 (649.4, 718.7)	704.5 (670.2, 740.2)	775.2 (739.5, 812.1)	713.2 (679.3, 748.4)

NOTE: National data not available.

Source: Washington State Department of Health, Comprehensive Hospital Abstract Reporting System (CHARS)