

Communicable | Disease

2009 Update

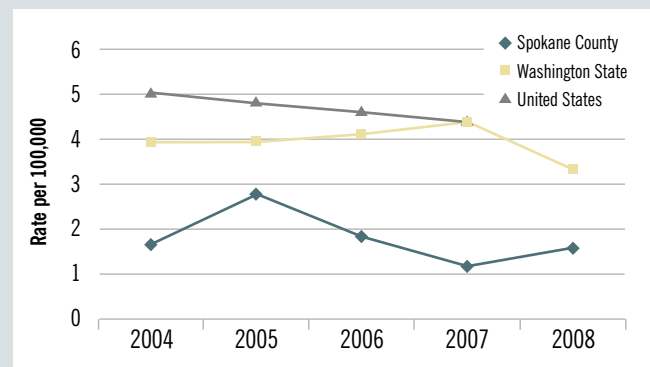
This indicator is 1 of 44 Spokane Counts indicators found at www.srhd.org/SpokaneCounts

Tuberculosis

Tuberculosis (TB) is reported as the number of cases per 100,000 individuals. A century ago, tuberculosis was a leading cause of death in the United States.¹ Since that time, public health and medicine have made great strides to control this disease. Tuberculosis is spread by an infected individual releasing TB into the air through coughing, sneezing, or even talking. Treatment for active TB is a 6-12 month course of medication that must be taken as prescribed to be effective.²

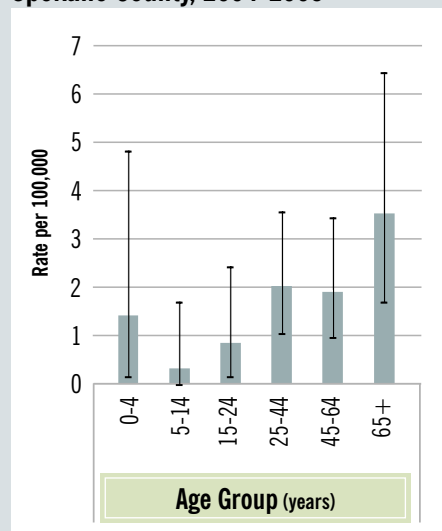
In Spokane County, 7 individuals were diagnosed with active tuberculosis in 2008. There was no significant change in the TB rate from 2004 to 2008. Overall, Spokane County had a lower rate of TB than did Washington State or the U.S. during 2004 to 2008.

Tuberculosis



Source: Washington State Department of Health; Centers for Disease Control and Prevention

Demographic Disparities in Tuberculosis Spokane County, 2004-2008



Source: Washington State Department of Health

There was no difference in TB by sex.

Among Spokane County residents in 2004 to 2008:

- The likelihood of having TB increased as age increased when using statistical significance testing.

Tuberculosis cases consist of individuals who are sick with the disease and have symptoms. For every one active TB case in Spokane County, there are approximately 12-13 individuals identified with a latent TB infection.^{3,4} Individuals with a latent TB infection have the TB organism in their bodies, but it is not active. They do not have symptoms of TB and cannot spread the disease. The organism may become active at a later time, so these individuals are often prescribed medication to prevent them from developing the disease in the future.⁵

Indicator: Tuberculosis

Rate per 100,000
(95% Confidence Interval)

	2004	2005	2006	2007	2008	2004-2008	
Total	Spokane County	1.6 (0.7, 3.3)	2.8 (1.4, 4.8)	1.8 (0.8, 3.5)	1.1 (0.4, 2.5)	1.5 (0.6, 3.1)	1.8 (1.3, 2.4)
	Washington State	3.9 (3.5, 4.5)	3.9 (3.5, 4.5)	4.1 (3.6, 4.6)	4.4 (3.9, 4.9)	3.3 (2.9, 3.8)	3.9 (3.7, 4.2)
	National	5.0	4.8	4.6	4.4		4.7 (04-07)
Age Group (years)	0-4						1.4 (0.2, 4.9)
	5-14						0.3 (0.0, 1.7)
	15-24						0.9 (0.2, 2.4)
	25-44						2.1 (1.1, 3.6)
	45-64						1.9 (1.0, 3.5)
	65+						3.5 (1.7, 6.5)
Sex	Male						2.3 (1.5, 3.4)
	Female						1.2 (0.7, 2.1)

NOTE: Rates for each year by age and sex were not listed because of the small number of cases for each group.

Source: Spokane Regional Health District; Washington State Department of Health; Centers for Disease Control and Prevention



1. Centers for Disease Control and Prevention. Leading Causes of Death, 1900-1998. www.cdc.gov/nchs/data/dvs/lead1900_98.pdf. Accessed 09/12/07.
2. Centers for Disease Control and Prevention. Tuberculosis: General Information. www.cdc.gov/tb/pubs/factsheets/tb.htm. Accessed 09/12/07.

3. Spokane Regional Health District. 03/29/05. Tuberculosis Report December 2005.
4. Spokane Regional Health District. 03/07/06. Tuberculosis Report December 2006.
5. Centers for Disease Control and Prevention. Tuberculosis: General Information. www.cdc.gov/tb/pubs/factsheets/tb.htm. Accessed 09/12/07.