

Mortality |

2009 Update

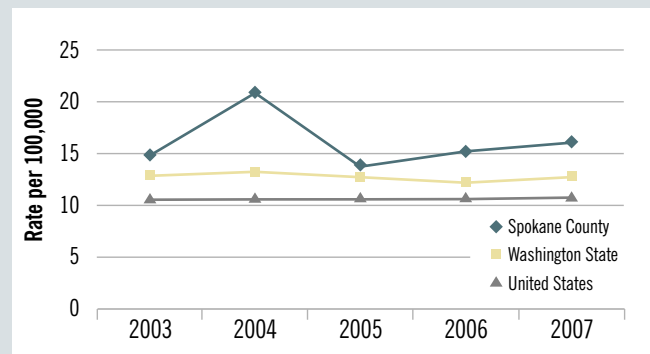
This indicator is 1 of 44 Spokane Counts indicators found at www.srhd.org/SpokaneCounts

Suicide

Suicide is the intentional ending of one's own life and is reported as the number of deaths from suicide per 100,000 individuals. Suicide was the eighth leading cause of death in Spokane County in 2007. Ninety-five percent of those who die by suicide suffered from mental illness, usually depression. If depressed, substance abuse increases the risk for suicide.¹ The Surgeon General released a call to action in 1999 for preventing suicide.²

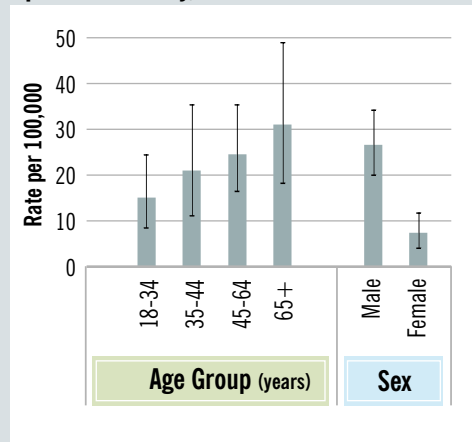
Each year, there is an average of 73 suicides in Spokane County. From 2003-2007, there was no significant change in the suicide rate. The 2007 suicide rate in Spokane County was significantly higher than that of Washington State and the U.S.

Suicide



Source: Washington State Department of Health; Centers for Disease Control and Protection

Demographic Disparities in Suicide Spokane County, 2007

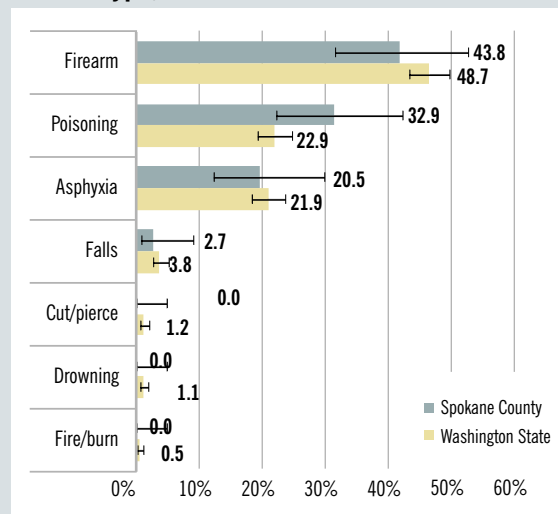


Source: Washington State Department of Health

Among Spokane County residents in 2007:

- The likelihood of suicide increased as age increased;
- Males were more likely than females to commit suicide; and
- There were no suicides among non-Whites.

Suicide Type, 2007



Source: Washington State Department of Health

The most frequently used method for suicide was the use of a firearm, followed by poisoning, including intentional overdoses of medication. When compared to Washington State, Spokane County had a higher proportion of suicide by poison that was close to statistical significance. In addition to completed suicides, there are individuals whose suicide attempts do not result in death. In 2007, there were 284 non-fatal suicide attempts that resulted in hospitalization among Spokane County residents. Likely the prevalence of attempted suicide is much greater, since hospitalizations only capture attempts that seek care and have an injury that requires inpatient hospitalization.

Indicator: Suicide

Rate per 100,000
(95% Confidence Interval)

	2003	2004	2005	2006	2007	
Total	Spokane County	14.8 (AA) (10.7, 18.2)	20.8 (AA) (16.7, 25.6)	13.9 (AA) (10.7, 17.9)	15.2 (AA) (11.9, 19.3)	16.1 (AA) (12.7, 20.3)
	Washington State	13.0 (AA) (12.1, 14.0)	13.2 (AA) (12.3, 14.2)	12.7 (AA) (11.8, 13.6)	12.2 (AA) (11.3, 13.0)	12.9 (AA) (12.1, 13.8)
	National	10.8 (AA)	10.7 (AA)	10.9 (AA)	10.9 (AA)	10.8 (AA)
Age Group (years)	10-17	3.9 (0.5, 13.5)	7.9 (2.1, 19.8)	5.9 (1.2, 16.8)	2.0 (0.1, 9.9)	0.0 (0.0, 7.2)
	18-34	13.9 (7.6, 23.2)	20.7 (12.8, 31.6)	13.8 (7.5, 23.0)	16.4 (9.6, 26.2)	15.2 (8.7, 24.6)
	35-44	25.2 (14.4, 40.9)	31.8 (19.4, 49.0)	16.0 (7.7, 29.3)	14.4 (6.6, 27.2)	20.9 (11.2, 35.7)
	45-64	22.1 (14.1, 33.2)	31.8 (22.0, 44.4)	26.3 (17.6, 37.8)	25.5 (17.1, 36.6)	24.8 (16.6, 35.6)
	65+	16.8 (7.7, 31.7)	22.1 (11.5, 38.6)	12.7 (5.1, 25.9)	24.9 (13.6, 41.7)	31.2 (18.5, 49.2)
Sex	Male	23.3 (17.2, 30.8)	31.1 (24.1, 39.6)	21.9 (16.1, 29.2)	23.9 (17.8, 31.3)	26.6 (20.3, 34.3)
	Female	6.9 (3.9, 11.3)	11.4 (7.4, 16.8)	7.2 (4.1, 11.7)	8.0 (4.7, 12.6)	7.4 (4.3, 11.8)
Race	White	15.9 (12.2, 20.3)	21.0 (16.8, 25.9)	14.7 (11.2, 18.9)	16.1 (12.5, 20.4)	17.9 (14.2, 22.5)
	Non-White		22.5 (10.3, 49.1)	11.2 (3.8, 32.9)	11.0 (2.2, 31.1)	0.0 (0.0, 13.9)

Source: Washington State Department of Health, Center for Health Statistics; Centers for Disease Control and Prevention
AA=Age-adjusted rate