

(A Technical Summary of Selected Public Health Indicators)

Health | Behaviors

2009 Update

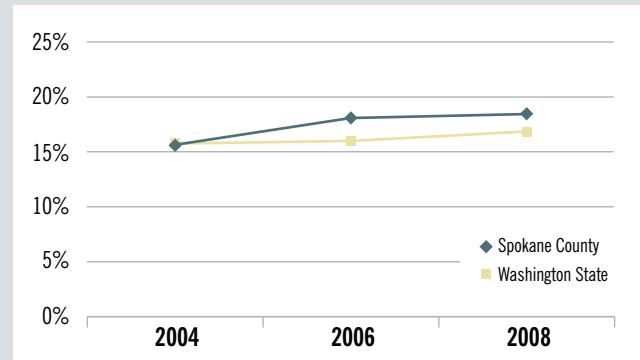
This indicator is 1 of 44 Spokane Counts indicators found at www.srhd.org/SpokaneCounts

Illicit Drug Use (youth)

Youth drug use is measured by the individuals in grades 8, 10, or 12 who used any illicit drug one or more times in the last 30 days. Drug use among youth may be physically harmful and may lead to other dangerous or unhealthy behaviors.¹

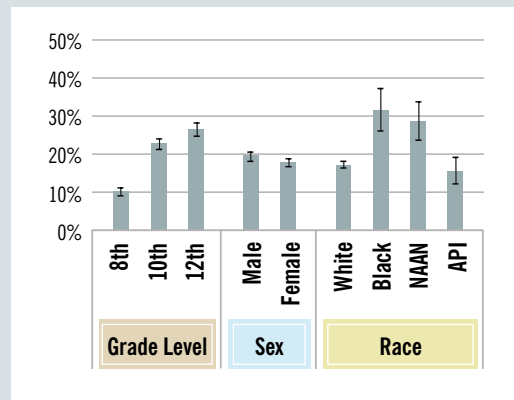
In Spokane County in 2008, nearly one in five adolescents reported using an illicit drug in the last month. The proportion of youth who used drugs increased significantly between 2004 and 2008. The proportion of youth drug users in Spokane County was significantly higher than that of Washington State in 2008.

Youth Illicit Drug Use



Source: Washington State Healthy Youth Survey

Demographic Disparities in Youth Illicit Drug Use, Spokane County, 2008

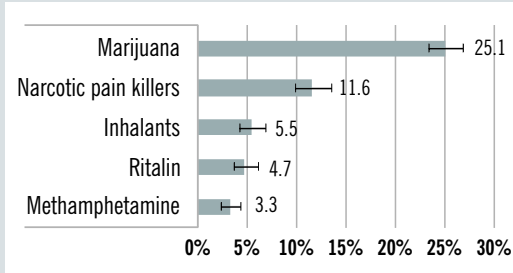


Source: Washington State Healthy Youth Survey, NAAN=Native American/Alaska Native, API=Asian/Pacific Islander

Among Spokane County youth in 2008:

- Illicit drug use increased as grade level increased;
- Males were more likely to use illicit drugs than females; and
- Compared to Whites, Blacks and Native Americans/Alaska Natives were more likely to use illicit drugs.

Types of Drug Use Among 12th Graders Spokane County, 2008



Source: Washington State Healthy Youth Survey

Among 12th graders in Spokane County in 2008, marijuana was the most used illicit drug. One-quarter reported using marijuana in the last month. The second most used illicit drug was narcotics, such as Vicodin, Oxycontin, or Percocet. The illicit drug use indicator does not include individuals using prescription drugs for medical purposes.

Indicator: Illicit Drug Use (youth)

Percent
(95% Confidence Interval)

	2004	2006	2008	
Total	Spokane County	15.5% (14.5, 16.6)	18.1% (17.3, 18.9)	18.4% (17.7, 19.2)
	Washington State	15.8% (15.3, 16.3)	16.0% (15.5, 16.4)	16.9% (16.4, 17.4)
Grade Level	8th grade	7.8% (6.7, 9.1)	9.5% (8.5, 10.5)	10.0% (9.1, 10.9)
	10th grade	20.1% (18.0, 22.3)	21.6% (20.2, 23.1)	22.5% (21.1, 24.1)
	12th grade	21.7% (19.6, 24.0)	27.6% (25.7, 29.6)	26.5% (24.8, 28.3)
Sex	Male	16.4% (14.9, 18.0)	18.0% (16.9, 19.3)	19.4% (18.2, 20.5)
	Female	14.6% (13.2, 16.1)	18.0% (16.9, 19.2)	17.6% (16.5, 18.7)
Race	White	15.3% (14.2, 16.6)	17.4% (16.5, 18.3)	17.1% (16.3, 18.0)
	Black	28.1% (19.5, 38.7)	27.8% (22.1, 34.3)	31.3% (26.0, 37.2)
	Native American/Alaska Native	21.6% (15.6, 29.1)	26.4% (21.4, 32.1)	28.4% (23.5, 33.8)
	Asian/Pacific Islander	9.4% (6.1, 14.4)	14.9% (11.4, 19.2)	15.3% (12.1, 19.1)

NOTE: National data not available.

Source: Washington State Healthy Youth Survey



January 2010

Spokane Regional Health District | Disease Prevention and Response, Community Health Assessment
1101 W. College, Room 360 | Spokane, WA 99201 | DIRECT 509.323.2853 FAX 509.232.1706 TDD 509.324.1464