

(A Technical Summary of Selected Public Health Indicators)

Health | Status

2009 Update

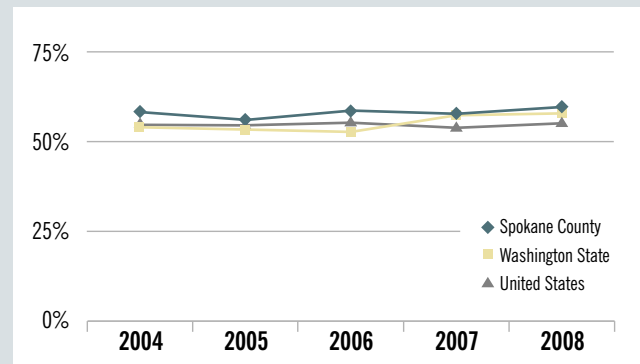
This indicator is 1 of 44 Spokane Counts indicators found at www.srhd.org/SpokaneCounts

Health Status (adults)

Perceived health status measures individuals 18 years of age or older who self-reported their general health status as excellent or very good as compared to good, fair, or poor. Response to this broad question covers one's perception of physical, mental, and social well-being, which has been shown to be a good predictor of mortality.¹

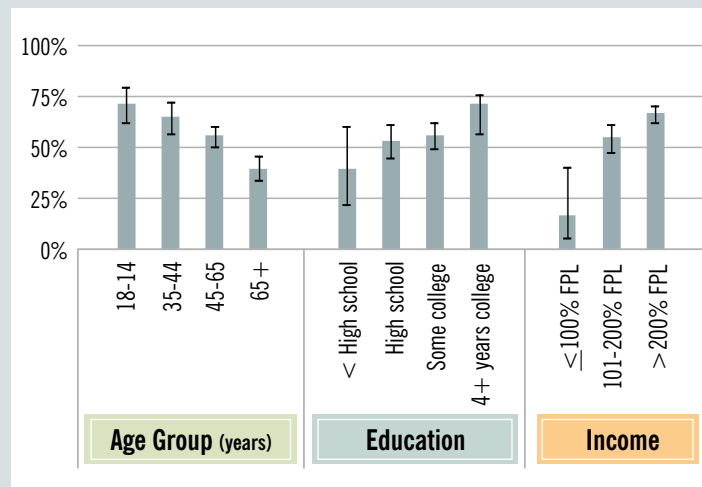
More than half of Spokane County adults felt their general health was excellent or very good in 2008. There was no significant change in this proportion of perceived health status from 2004 to 2008. The proportion of adults who felt very healthy in Spokane County was similar to that of Washington State and the U.S. in 2008.

Adults with Excellent or Very Good Perceived Health Status



Source: Behavioral Risk Factor Surveillance System

Demographic Disparities in Adults with Excellent or Very Good Perceived Health Status, Spokane County, 2008



Source: Behavioral Risk Factor Surveillance System

There was no difference by sex or race.

Among Spokane County adults in 2008:

- Excellent or very good perceived health decreased as age increased;
- Excellent or very good perceived health increased as income increased; and
- Excellent or very good perceived health increased as educational level increased.

Indicator: Health Status (adults)

Percent

(95% Confidence Interval)

	2004	2005	2006	2007	2008	
Total	Spokane County	57.7% (54.4, 60.9)	55.2% (51.1, 59.2)	58.2% (53.8, 62.4)	57.2% (53.8, 60.5)	59.0% (55.4, 62.5)
	Washington State	53.7% (52.9, 54.4)	53.2% (52.5, 53.8)	52.7% (52.0, 53.3)	56.6% (55.7, 57.5)	57.5% (56.5, 58.5)
	National	54.9%	54.3%	55.1%	54.2%	55.1%
Age Group (years)	18-34	64.4% (57.5, 70.8)	62.9% (54.3, 70.7)	70.8% (61.6, 78.5)	66.6% (58.2, 74.1)	70.5% (61.5, 78.2)
	35-44	66.2% (58.7, 72.9)	69.9% (61.6, 77.0)	67.5% (55.5, 77.6)	59.8% (52.0, 67.2)	64.0% (56.1, 71.1)
	45-64	54.7% (49.5, 59.8)	49.9% (43.4, 56.4)	50.9% (45.1, 56.7)	56.6% (52.1, 61.1)	54.7% (50.0, 59.3)
	65+	40.5% (34.1, 47.3)	34.9% (28.5, 42.0)	39.5% (30.9, 48.6)	38.8% (33.8, 44.2)	39.1% (33.7, 44.8)
	Male	58.2% (52.9, 63.3)	56.7% (50.2, 63.0)	60.1% (53.0, 66.8)	57.0% (51.6, 62.2)	61.4% (55.7, 66.9)
Female	57.2% (53.1, 61.1)	53.8% (48.7, 58.8)	56.4% (51.0, 61.6)	57.3% (53.2, 61.4)	56.9% (52.3, 61.3)	
Income	≤100% FPL*	51.2% (34.3, 67.9)	46.2% (24.1, 69.9)	49.8% (29.9, 69.8)	25.0% (14.8, 39.0)	16.6% (5.7, 39.7)
	101-200% FPL	46.2% (40.0, 52.5)	45.7% (38.7, 52.9)	52.0% (43.8, 60.0)	51.8% (45.4, 58.0)	53.8% (46.8, 60.7)
	>200% FPL	63.8% (60.0, 67.4)	61.5% (56.7, 66.2)	62.7% (57.5, 67.5)	65.3% (61.2, 69.2)	65.7% (61.4, 69.7)
Education	Less than high school	42.9% (58.3, 58.9)	41.3% (23.0, 62.4)	33.0% (20.3, 48.9)	32.1% (17.9, 50.5)	39.2% (22.0, 59.6)
	High school graduate	46.5% (59.9, 53.1)	41.9% (34.4, 49.9)	45.0% (36.7, 53.7)	52.3% (44.8, 59.7)	52.5% (44.5, 60.3)
	Some college	57.9% (52.3, 63.4)	56.7% (49.6, 63.6)	57.9% (49.5, 65.8)	54.3% (48.6, 60.0)	55.5% (49.2, 61.7)
	4+ yrs college, graduate	68.8% (63.7, 73.5)	66.4% (60.3, 72.0)	71.9% (65.9, 77.1)	67.2% (62.3, 71.8)	70.1% (65.2, 74.6)
Race	White	57.3% (53.9, 60.6)	54.5% (50.3, 58.6)	58.4% (53.9, 62.8)	51.2% (35.3, 66.8)	48.5% (30.8, 66.5)
	Non-White	64.4% (48.7, 77.0)	69.8% (49.3, 84.6)	53.3% (33.7, 71.9)	57.3% (53.8, 60.7)	59.5% (55.8, 63.1)

FPL=Federal Poverty Level

Source: Behavioral Risk Factor Surveillance System



January 2010

Spokane Regional Health District | Disease Prevention and Response, Community Health Assessment
1101 W. College, Room 360 | Spokane, WA 99201 | DIRECT 509.323.2853 FAX 509.232.1706 TDD 509.324.1464