

## Social and | Mental Health

2009 Update

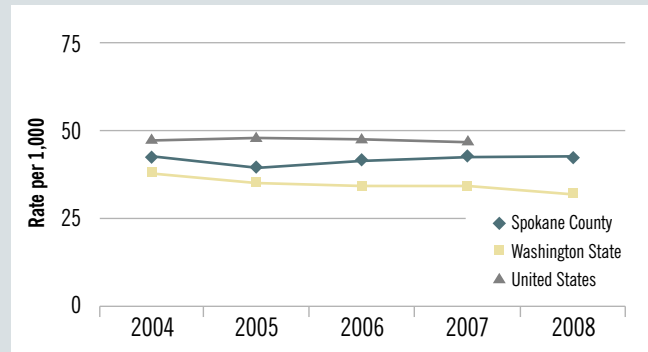
This indicator is 1 of 44 Spokane Counts indicators found at [www.srhd.org/SpokaneCounts](http://www.srhd.org/SpokaneCounts)

### Child Abuse

Child abuse is measured as the number of children 0-17 years of age who were reported to Child Protective Services as victims of abuse and were accepted for further action. The rate is reported per 1,000 children. The incidence of abuse is likely higher than the rates indicate because not all abuse gets reported.

In Spokane County, Child Protective Services accepted 4,568 referrals of children suspected of being abused in 2008. There was no significant change in the rate of child abuse from 2004 to 2008. The child abuse rate in Spokane County was significantly higher than that of Washington State in 2008, but lower than that of the U.S. in 2007.

### Child Abuse



Source: Department of Social and Health Services

### Indicator: Child Abuse

Rate per 1,000 children  
(95% Confidence Interval)

	2004	2005	2006	2007	2008	
Total	Spokane County	42.3 (41.1, 43.5)	39.3 (38.1, 40.4)	41.6 (40.4, 42.8)	42.7 (41.5, 43.9)	41.7 (40.5, 42.9)
	Washington State	38.1 (37.7, 38.4)	35.1 (34.8, 35.3)	34.3 (34.0, 34.6)	34.2 (33.9, 34.4)	32.1 (31.8, 32.3)
	National	47.7	48.3	47.9	47.2	47.2

Source: Department of Social and Health Services