

Health | Behaviors

2009 Update

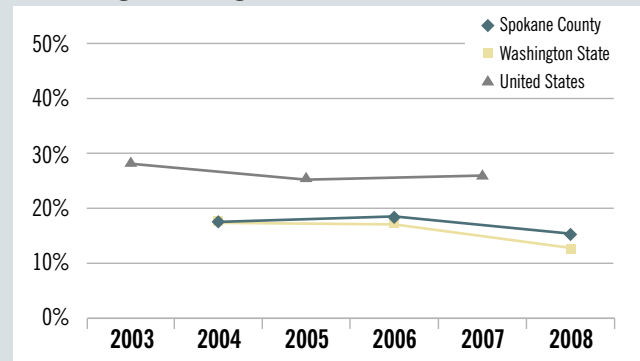
This indicator is 1 of 44 Spokane Counts indicators found at www.srhd.org/SpokaneCounts

Binge Drinking (youth)

Youth binge drinking is measured by the individuals in grades 8, 10, and 12 who drank five or more drinks in a row in the last 2 weeks. Binge drinking accounts for over 90% of alcohol consumed by people who are under the legal drinking age of 21. The effects of binge drinking among youth may include school or social problems, abuse of other drugs, and an increased risk of unintentional and intentional injury.¹

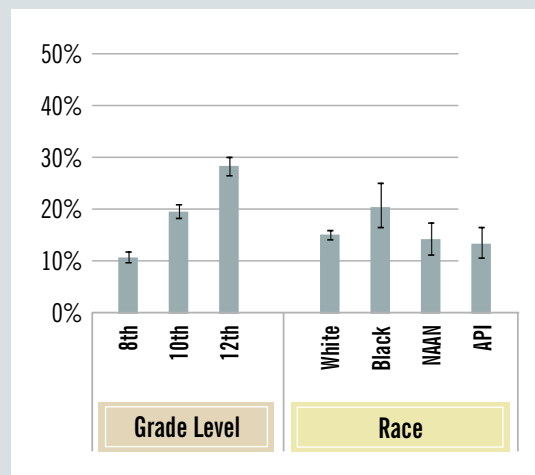
During 2008 in Spokane County, 15% of adolescents reported binge drinking in the prior 2 weeks. From 2004 to 2008, there was a significant decrease in the proportion of adolescent binge drinking. The proportion of Spokane County youth who binge drink was higher than that of Washington State in 2008, but lower than that of the U.S. in 2007.

Youth Binge Drinking



Source: Washington State Healthy Youth Survey; Youth Risk Behavior Surveillance System Data

Demographic Disparities in Youth Binge Drinkers, Spokane County, 2008



Source: Washington State Healthy Youth Survey

There was no difference in youth binge drinking by sex.

Among Spokane County youth in 2008:

- Binge drinking increased as grade increased; and
- Compared to Whites, Blacks were more likely to binge drink.

Indicator: Binge Drinking (youth)

Percent

(95% Confidence Interval)

	2004	2006	2008	
Total	Spokane County	17.4% (16.3, 18.5)	18.3% (17.2, 19.5)	15.1% (14.4, 15.7)
	Washington State	17.4% (16.9, 17.9)	17.3% (16.6, 18.0)	12.6% (12.2, 13.0)
	National	28.3% (2003)	25.5% (2005)	26.0% (2007)
Grade Level	8th grade	9.1% (7.9, 10.5)	10.5% (9.1, 12.0)	11.1% (10.2, 12.1)
	10th grade	20.3% (18.2, 22.5)	20.3% (18.4, 22.4)	20.0% (18.6, 21.4)
	12th grade	27.0% (24.6, 29.5)	28.3% (25.6, 31.2)	28.7% (26.9, 30.6)
Sex	Male	16.9% (15.4, 18.5)	17.9% (16.3, 19.7)	15.7% (14.8, 16.7)
	Female	17.8% (16.3, 19.5)	18.5% (16.9, 20.1)	14.4% (13.6, 15.3)
Race	White	17.5% (16.3, 18.8)	17.6% (16.3, 19)	15.4% (14.6, 16.2)
	Black	16.6% (10.6, 25.2)	25.0% (17.6, 34.2)	20.8% (16.9, 25.5)
	Native American/Alaska Native	26.0% (20.1, 32.9)	23.1% (16.9, 30.7)	14.5% (11.7, 17.9)
	Asian/Pacific Islander	10.9% (7.4, 15.6)	15.3% (10.4, 21.8)	13.7% (10.9, 16.9)

Source: Washington State Healthy Youth Survey; Youth Risk Behavior Surveillance System Data



January 2010

Spokane Regional Health District | Disease Prevention and Response, Community Health Assessment
1101 W. College, Room 360 | Spokane, WA 99201 | DIRECT 509.323.2853 FAX 509.232.1706 TDD 509.324.1464