

## Reproductive | Health

2009 Update

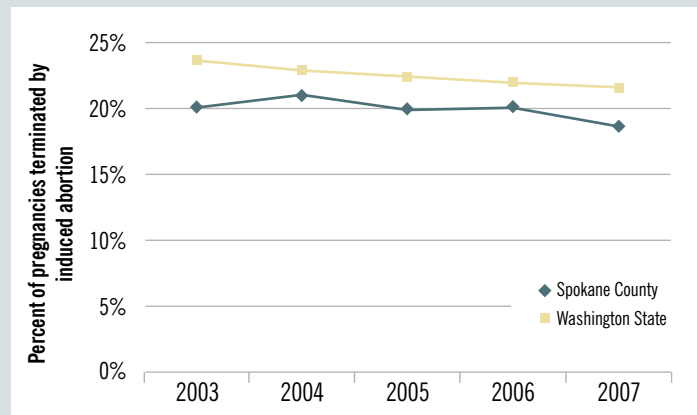
This indicator is 1 of 44 Spokane Counts indicators found at [www.srhd.org/SpokaneCounts](http://www.srhd.org/SpokaneCounts)

### Abortion

Abortions are reported as the percent of pregnancies that are terminated by an induced abortion among women of child-bearing age (15-44 years). The decision to abort a pregnancy may be due to medical complications of either the mother or the fetus, but is usually because the pregnancy was unintended. "Education regarding abstinence, contraceptive use and practices, as well as access to and education regarding safe, effective, and affordable contraception and family-planning services might help reduce the incidence of unintended pregnancy and, therefore, the number of legal induced abortions."<sup>1</sup>

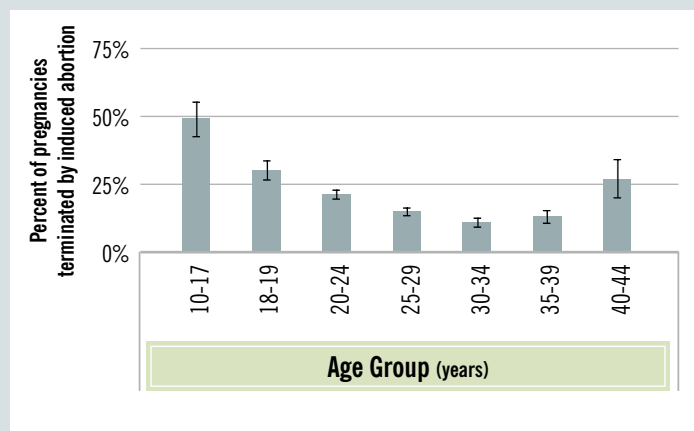
In Spokane County, approximately 1 out of 5 pregnancies ended in an abortion in 2007. The abortion rate significantly decreased from 2003 to 2007. Spokane County had a lower proportion of pregnancies that ended in an abortion in 2007 than did Washington State.

### Abortion



Source: Washington State Department of Health

### Demographic Disparities in Abortion Spokane County, 2007



Source: Washington State Department of Health

There was no difference in abortion by race.

In 2007, among pregnant Spokane County women:

- The likelihood of abortion decreased as age increased.

## Indicator: Abortion

Percent  
(95% Confidence Interval)

	2003	2004	2005	2006	2007	
<b>Total</b>	Spokane County	20.1% (19.2, 21.1)	21.0% (20.1, 22.0)	19.9% (19.0, 20.8)	20.1% (19.2, 21.0)	18.6% (17.7, 19.5)
	Washington State	23.7% (23.4, 23.9)	22.9% (22.7, 23.2)	22.4% (22.2, 22.7)	22.0% (21.8, 22.3)	21.6% (21.3, 21.8)
<b>Age Group (years)</b>	15-17	39.1% (32.8, 45.6)	43.1% (37.1, 49.2)	48.3% (41.9, 54.7)	46.1% (39.7, 52.5)	49.4% (43.0, 55.8)
	18-19	32.6% (28.8, 36.6)	37.2% (33.2, 41.3)	34.9% (31.0, 38.9)	32.5% (28.9, 36.4)	30.3% (26.7, 34.2)
	20-24	25.0% (23.1, 26.9)	24.5% (22.7, 26.4)	24.7% (22.9, 26.6)	25.3% (23.6, 27.2)	21.4% (19.8, 23.2)
	25-29	15.4% (13.8, 17.1)	16.4% (14.8, 18.1)	13.8% (12.3, 15.3)	14.3% (12.9, 15.8)	15.2% (13.7, 16.7)
	30-34	11.2% (9.5, 13.0)	12.9% (11.2, 14.8)	12.0% (10.3, 13.9)	13.2% (11.5, 15.1)	11.0% (9.4, 12.8)
	35-39	18.2% (15.1, 21.6)	17.7% (14.9, 20.9)	15.1% (12.6, 18.1)	16.9% (14.3, 19.9)	13.0% (10.7, 15.8)
	40-44	21.0% (15.3, 27.8)	24.2% (18.2, 31.5)	22.8% (16.8, 30.2)	18.4% (13.2, 25.1)	26.7% (20.2, 34.4)
<b>Race</b>	White	14.8% (14.0, 15.8)	18.5% (17.6, 19.5)	17.7% (16.8, 18.7)	17.7% (16.8, 18.6)	15.7% (14.9, 16.6)
	Black	19.6% (14.0, 26.7)	25.2% (18.9, 32.6)	21.4% (15.7, 28.4)	24.5% (18.6, 31.6)	19.7% (14.3, 26.7)
	Native American/Alaska Native	21.2% (15.9, 27.8)	26.4% (20.7, 33.0)	21.1% (16.1, 27.1)	19.0% (14.4, 24.7)	18.6% (14.1, 24.3)
	Asian/Pacific Islander	22.9% (17.7, 29.1)	28.0% (22.4, 34.4)	20.3% (15.5, 26.0)	12.1% (8.6, 16.9)	15.0% (10.9, 20.4)

NOTE: National data not available.

Source: Washington State Department of Health, Center for Health Statistics



January 2010

Spokane Regional Health District | Disease Prevention and Response, Community Health Assessment  
1101 W. College, Room 360 | Spokane, WA 99201 | DIRECT 509.323.2853 FAX 509.232.1706 TDD 509.324.1464