

# Disability in Spokane County

introduction

The Washington State Population Survey gathers information about State residents regarding employment, income, health insurance coverage, health status, and demographic characteristics. One representative per household is interviewed, answering questions about all members of the household. Several questions are asked about disability to determine if an individual suffers from a long lasting sensory, physical, or mental condition and to determine if these conditions limit their ability to care for themselves in the home, to go outside alone, or their ability to be employed.

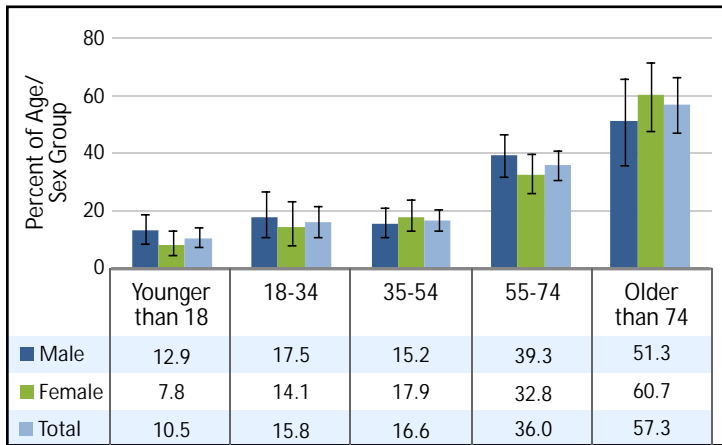
## Percent of Population with a Self-Reported Disability

The total percentage of the Spokane County population with a disability remained stable from 2000 to 2008, with the exception of 2004 when a higher proportion was reported. Approximately 1 in 5 people reported a disability; 19.1% in 2000, 16.8% in 2002, 22.8% in 2004, 20.5% in 2006, and 20.9% in 2008. This means there are currently between 82,000 and 102,000 people in the Spokane community living with a disability.

## Age and Sex

Men and women of all age groups were equally as likely to report a disability. Disability increased as age increased (Figure 1). An estimated 14,200 (+/- 3,600) individuals 75 years of age or older are living with some type of disability.

Figure 1  
Population with a Disability by Age and Sex  
Spokane County, 2008

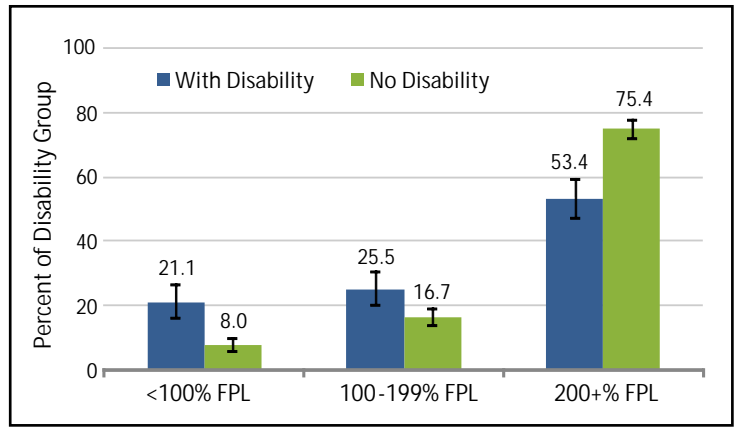


## Income

People with disabilities were significantly more likely than those without disabilities to be living on incomes below 100% of the Federal Poverty Level (FPL). People with disabilities were 2 1/2 times more likely to be living on incomes below 200% FPL compared to those with no disabilities (Figure 2).

The FPL is based on income thresholds for different household sizes and household composition. For a household of four persons, the poverty income threshold was \$21,200 in 2008.

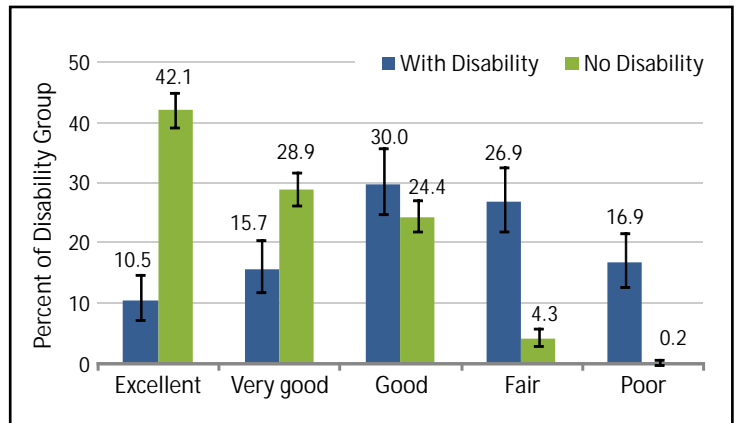
Figure 2  
Household Income by Disability Status  
Spokane County, 2008



## Self-Reported Health Status

In 2008, people with a disability were nearly 7 times less likely to say their health was “excellent” or “very good”, compared to those without a disability. Among those with a disability, 43.8% (+/- 5.9%) reported their general health status as “fair” or “poor”, compared to 4.5% (+/- 1.3%) of people without disabilities (Figure 3).

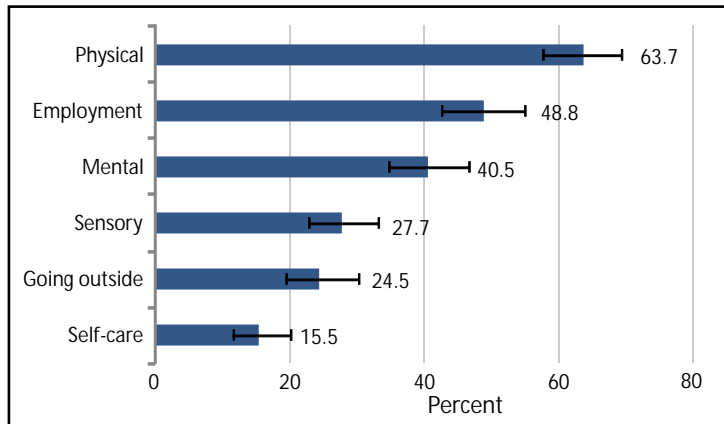
Figure 3  
Self-Reported Health Status by Disability Status  
Spokane County, 2008



## Types of Disabilities

Among people who reported having a disability, “physical limitation” was the most commonly reported disability (64%); more than one type of disability could be reported (Figure 4).

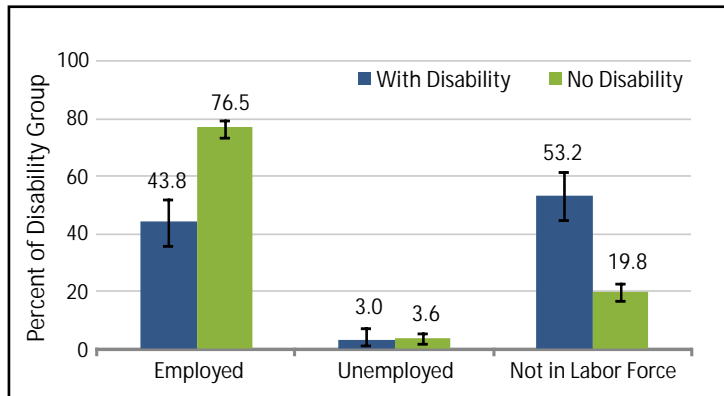
Figure 4  
Type of Disabilities Among the Disabled Population  
Spokane County, 2008



## Labor Force Status

People between the ages of 15 and 64 years with disabilities were more than 4 times less likely to be employed compared to people in the same age group without disabilities. More than half of the individuals with disabilities in this age group were not in the labor force, meaning they had either retired early, were unable to work, or were not looking for work (Figure 5).

Figure 5  
Labor Force Status by Disability Status Among Individuals  
Age 15-64 Years, Spokane County, 2008



Nearly half of the individuals 15 years of age or older who reported a disability also reported difficulty working at a job or business because of their condition. This represents an estimated total of 40,300 (+/- 7,100) people in our community.

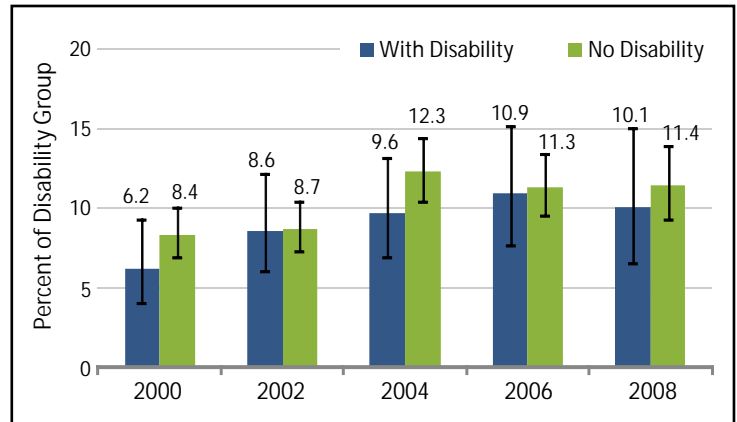
In 2008, the unemployment rate of individuals with disabilities was 6.4% (+/- 5.4%) compared to 4.4% (+/- 1.9%) of those without

disabilities. Those who are not in the labor force are not included in the unemployment rates.

## Health Insurance Coverage

People with disabilities were as likely as those who do not have a disability to report not having health insurance coverage. The percentage of those without insurance for the two populations remained stable between the years of 2000-2008 (Figure 6).

Figure 6  
Individuals Lacking Health Insurance by Disability Group  
Spokane County, 2000 - 2008



## About the State Population Survey

The State Population Survey is administered every other year by an independent contractor hired to conduct the survey on behalf of the Office of Financial Management, the governor's budget and policy office. Potential participants are selected at random, providing the opportunity to statistically develop the characteristics of the whole population of Washington State.

In 2000, 752 Spokane County residents were surveyed, representing 1,985 individuals.

In 2002, 750 Spokane County residents were surveyed, representing 1,851 individuals.

In 2004, 754 Spokane County residents were surveyed, representing 1,910 individuals.

In 2006, 755 Spokane County residents were surveyed, representing 1,914 individuals.

In 2008, 682 Spokane County residents were surveyed, representing 1,685 individuals.