

Spokane Regional Health District evaluates death records to track mortality trends among county residents. The leading causes of death, as presented here, parallel that of the National Center for Health Statistics (NCHS), part of the U.S. Centers for Disease Control and Prevention (CDC). Each cause of death represents a group of distinct diagnoses. For example, within the category of cancer are many types of cancer, each with its own risk factors, treatments and preventive measures. National mortality statistics can be found at the CDC's web site: cdc.gov/nchs/fastats/deaths.htm. Washington state data is available through the Washington State Department of Health, doh.wa.gov/DataandStatisticalReports.aspx.

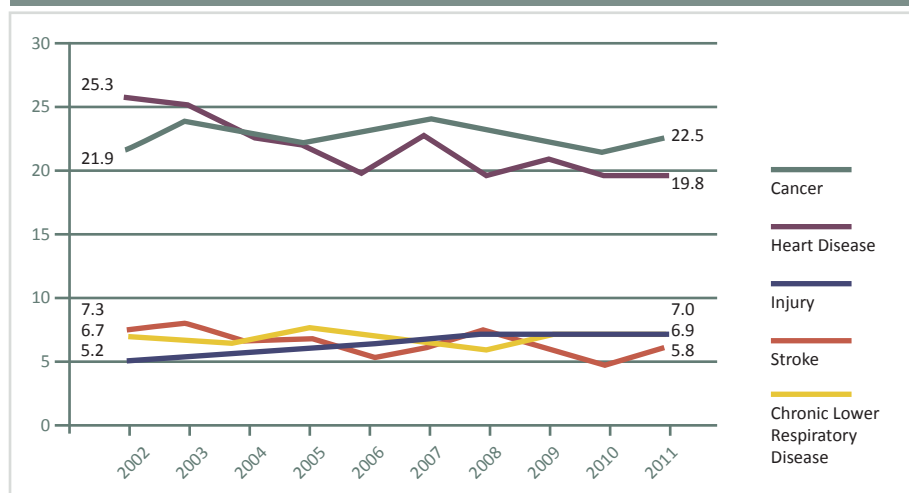
The leading causes of death among Spokane County residents in 2011 were cancer and heart disease.

Nationally, and in Washington state, these two causes of deaths accounted for nearly half of all deaths. In Spokane County, the proportion has been decreasing and in 2011 these two causes of death accounted for two in five deaths. Leading causes of death vary by age. Perinatal conditions, which make survival difficult, such as a preterm birth, respiratory distress, or feeding problems are the leading cause of death for infants. Younger age groups are more likely to die from either intentional or unintentional injury than are older age groups. Among older age groups, leading causes of death are more likely related to physical health conditions, such as heart disease.

Top 10 Leading Causes of Death, Spokane County 2011

Rank	Cause of Death	Number of Deaths	Percent of Total	Cumulative Percent
1	Cancer	901	22.5%	22.5%
2	Heart Disease	791	19.8%	42.3%
3	Chronic Lower Respiratory Disease	280	7.0%	49.3%
4	Unintentional Injury	277	6.9%	56.2%
5	Stroke	231	5.8%	62.0%
6	Alzheimer's Disease	212	5.3%	67.3%
7	Diabetes	134	3.4%	70.7%
8	Influenza and Pneumonia	65	1.6%	72.3%
9	Suicide	64	1.6%	73.9%
10	Chronic Liver Disease/Cirrhosis	59	1.5%	75.4%
	All Other Causes	985	24.6%	100.0%
	Total	3,999	100.0%	

Leading Causes of Death Over Time, Spokane County



Leading Causes of Death by Age Group, 2007-2011

Age Group	Cause of Death	Number of Deaths	Percent of Total	Cumulative Percent
< 1 year*	Perinatal Conditions	57	35.0%	35.0%
	Birth Defects	45	27.6%	62.6%
	Sudden Infant Death Syndrome	35	21.5%	84.0%
	All Other Causes	26	16.0%	100.0%
	TOTAL	163	100.0%	
1-14 years	Unintentional Injuries	20	29.0%	29.0%
	Birth Defects	9	13.0%	42.0%
	Cancer	7	10.1%	52.2%
	General Illness	5	7.2%	59.4%
	All Other Causes	28	40.6%	100.0%
TOTAL	69	100.0%		
15-24 years	Unintentional Injuries	89	46.4%	46.4%
	Suicide	35	18.2%	64.6%
	Homicide	14	7.3%	71.9%
	All Other Causes	54	28.1%	100.0%
TOTAL	192	100.0%		
25-44 years	Unintentional Injuries	251	30.9%	30.9%
	Suicide	110	13.5%	44.4%
	Cancer	107	13.2%	57.6%
	All Other Causes	345	42.4%	100.0%
TOTAL	813	100.0%		
45-64 years	Cancer	1,235	32.8%	32.8%
	Heart Disease	612	16.3%	49.1%
	Unintentional Injuries	369	9.8%	58.9%
	All Other Causes	1,547	41.1%	100.0%
TOTAL	3,763	100.0%		
65+ years	Heart Disease	3,376	22.8%	22.8%
	Cancer	3,146	21.3%	44.1%
	Chronic Lower Respiratory Disease	1,116	7.5%	51.6%
	All Other Conditions	7,153	48.4%	100.0%
TOTAL	14,791	100.0%		

Data Source: Washington State Department of Health, Center for Health Statistics

*The NCHS uses a separate leading cause of death list for infants than for other age groups.