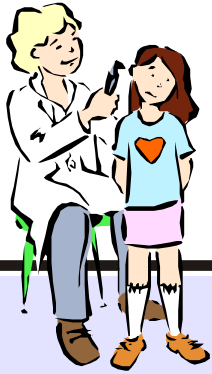


Child Health Notes

Promoting early identification and partnerships between families, primary health care providers & the community.

Distributed by: Spokane Regional Health District - Children with Special Health Care Needs Program. Contributors: Washington State Department of Health and University of Washington - Center on Human Development and Disability. Electronic versions of Spokane Child Health Notes: www.srhd.org/health/women-children/childhealthnotes.asp



Health Supervision for Children in Foster Care

Children in foster care have a higher prevalence of physical, developmental, dental, and behavioral health conditions than any other group of children and youth. There is a 60-80% chance that a child in foster care in your practice will have significant diagnosed or undiagnosed health problems. Children and youth in foster care need a medical home. There are systems and tools to help you meet the comprehensive health supervision needs of these children. These include:

- ◆ Identifiers that indicate if a child is in foster care: relatives, foster parents or social workers who bring a foster child to your office for the first time, may present you with a letter from DSHS that is signed by the Children's Administration Medical Consultant. This letter identifies your new patient as a child or youth in foster care, and lists information and resources that will support health supervision for the child and family.
- ◆ Enhanced reimbursement rates for Early and Periodic Screening, Diagnosis and Treatment (EPSDT) visits for children in foster care.
- ◆ Easy access to forms and tools to support the EPSDT visit.
- ◆ National publications with suggested guidelines for health supervision of foster children.

Updates on EPSDT For Foster Children

As of July, 2006, a new EPSDT exam is needed within 30 days of foster placement, even if the child already had a well-child check or placement exam during the current year.

Did you know that:

- ◆ EPSDT exams for all children in foster care in Washington State have an enhanced rate of reimbursement of \$120.00 per examination
- ◆ Even if a foster child had a recent well-child check, the child is eligible for a full EPSDT exam with each placement
- ◆ In addition to the regular schedule for EPSDT exams, all children in foster care between the ages of 7 and 20 are eligible for a full EPSDT exam every 12 months
- ◆ Children with complex health needs who have been in foster placement for a while may have a Comprehensive Health Report (previously called Passport). This report summarizes the child's illnesses, clinic visits, immunizations and medications. Be sure to ask the foster family or caseworker if the child has a Comprehensive Health Report.
- ◆ A recommendation letter accompanies the Passport/Comprehensive Health Report and outlines areas of concern that the care-giver is asked to discuss with the child's healthcare provider. You may also contact one of the Foster Care Public Health Nurses (at 509-363-3540, 509-363-3541 or 509-363-3347) to find out if a child has a Passport/Comprehensive Health Report. The nurse may be able to provide other health information such as a more complete growth history.

EPSDT Exam Must Include:

- ◆ Comprehensive health & developmental history
- ◆ Comprehensive physical examination
- ◆ Appropriate laboratory tests
- ◆ Age appropriate vision testing
- ◆ Age appropriate hearing testing
- ◆ Developmental Assessment
- ◆ Nutritional Assessment
- ◆ Health and education counseling
- ◆ Age appropriate mental health & substance abuse screening

Oral Health/Dental Assessment Must Include:

- ◆ Instruction to parent/guardian:
- ◆ How to clean teeth as they erupt
- ◆ How to prevent baby bottle tooth decay
- ◆ How to look for dental disease
- ◆ How dental disease is contracted
- ◆ Complete oral exam
- ◆ Preventative sealant application
- ◆ Application of fluoride varnish when appropriate
- ◆ Refer for any dental services not provided in the primary care office

Tools to Know About:

Washington State Forms:

- ◆ Download Well Child Examination form with family anticipatory guidance information: www1.dshs.wa.gov/msa/forms/eforms.html (Scroll down to the 13_683 through 13_686 section to access the forms)
- ◆ Order pre-printed paper Well Child Examination forms free of charge: <https://fortress.wa.gov/prt/printwa/wsprt/default.asp>
- ◆ Mental Health referral form: www1.dshs.wa.gov/msa/forms/eforms.html Scroll to form 01_192

Billing/Reimbursement:

- ◆ **Who is in foster care?** Check the “Other” column on the child’s Medicaid Medical ID Card and look for one of the following identifiers: D (DDD client in relative placement), F (foster care placement), or R (relative placement). These identifiers indicate that medical office EPSDT visits are eligible for the higher reimbursement rate.
- ◆ WA State DSHS, Health and Recovery Services Administration (HRSA) established an enhanced reimbursement EPSDT rate for providers. The rate is \$120.00 per EPSDT screening exam for foster care children and youth without regard to the periodicity schedule. This applies only to specific CPT codes (99381-99385 and 99391-99395) and **MUST** be billed with modifier 21. To receive the enhanced rate, the provider must use the DSHS Well Child Examination form (see above) or another charting tool of equivalent information.
- ◆ **For further information visit** <http://fortress.wa.gov/dshs/maa/> Click on Billing Instructions→Click Accept→Billing Instructions at top left of screen→Click on the letter “E” →EPSDT Program→Current Billing Instruction→Scroll to pages C2 and C3.

Information & Resources:

Local: DSHS Foster Care Public Health Nurses: (509) 363-3540;
(509) 363-3541; or
(509) 363-3347

Regional: DSHS Regional Medical Consultants are pediatricians who work part-time and serve as a foster care health consultant to social workers, public health nurses, primary health providers, etc. The Consultant can help providers access important health, behavioral, and other background information. To access the Regional Medical Consultant in your area, contact the foster child’s DSHS social worker.

National:

- ◆ *Fostering Health: Health Care for Children and Adolescents in Foster Care*, 2nd Edition (2004). Task Force on Health Care for Children in Foster Care and the American Academy of Pediatrics. Available from AAP Bookstore www.aap.org
- ◆ AAP Policy on Medical Care for Children in Foster Care: <http://aappolicy.aapublications.org/cgi/content/full/pediatrics;109/3/536>
- ◆ AAP website on Foster Care: www.aap.org/healthtopics/fostercare.cfm
- ◆ Georgetown University Survey of Promising Practices in Foster Care Health Care http://gucchd.georgetown.edu/programs/meeting_health_needs/



FREE Developmental Screenings

Available for infants and toddlers
under three years of age living in Spokane County

Developmental specialists will screen a child’s ability to move, communicate, learn, relate to others, see, hear, and eat.

**For 2008:
Screenings will be available
most months beginning in January**

Call the Spokane Regional Health District’s
Infant Toddler Network at 324-1651
to schedule a **FREE** appointment



Children with Special Health Care Needs
1101 West College Avenue, Suite 240
Spokane, WA 99201-2095 • (509) 324-1651

We’re Online!!
www.srhd.org